

CITY OF MENLO PARK

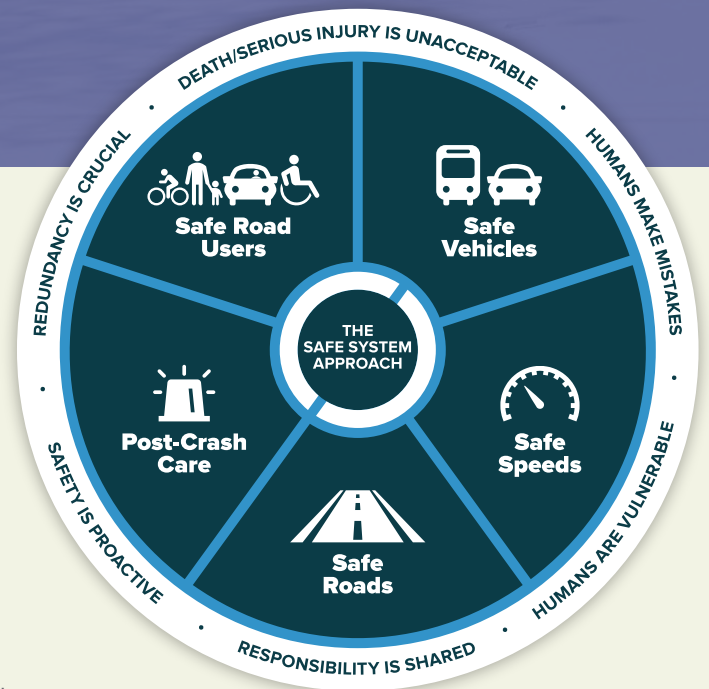
VISION ZERO ACTION PLAN

A Call to Action

Every year in Menlo Park, approximately one person dies and five people are seriously injured due to traffic collisions. These deaths and serious injuries are preventable and unacceptable.

People make mistakes; our roadway network should anticipate and accommodate those mistakes, so they do not lead to loss of life.

Menlo Park committed to Vision Zero in 2016 with the adoption of a Vision Zero policy in the General Plan Circulation Element.



Source:
Federal Highway Administration
highways.dot.gov/safety/zero-deaths



The Vision Zero Action Plan affirms our goal to eliminate all traffic fatalities and serious injuries by 2040. We will do this through the creation of a Safe System.

THE STATE OF SAFETY In Menlo Park

Police reports record who, how, and why people are killed or seriously injured traveling on our roadways. This is what we know from the most recent five years of available data.

Data source: Transportation Injury Mapping System (TIMS), 2017-2021

WHAT are common collision types?

INJURY COLLISIONS



40%



Unsafe vehicle speed

just over 25%



Vehicle turning

nearly 25%



Driver failure to yield



Common elements in injury collisions in Menlo Park:

- Unsafe speeds
- Drivers turning left or right
- Drivers failing to yield

WHO tends to be involved in collisions?

PEDESTRIAN INJURY COLLISIONS



nearly 30%
Involve someone 65 years or older

BICYCLE INJURY COLLISIONS



25%
Involve someone under 15 years



Seniors and children are overrepresented in injury collisions involving people walking and bicycling.

WHERE do collisions typically occur?

DOWNTOWN

nearly 25%



Of vehicle

nearly 50%



Of pedestrian

just over 20%



Of bicycle

Injury collisions citywide

STATE-OWNED ROADWAYS



nearly 40%
Of injury collisions citywide

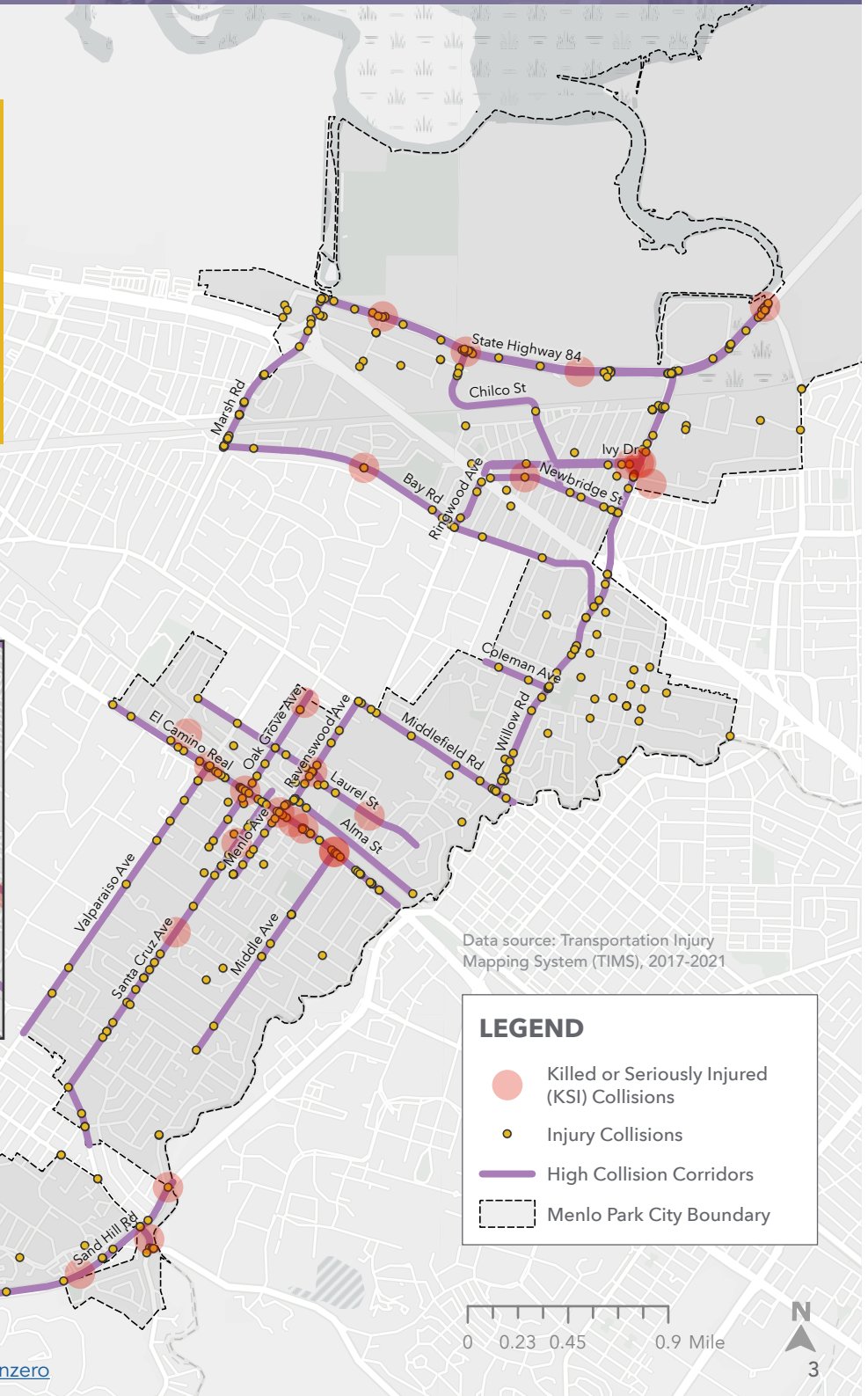
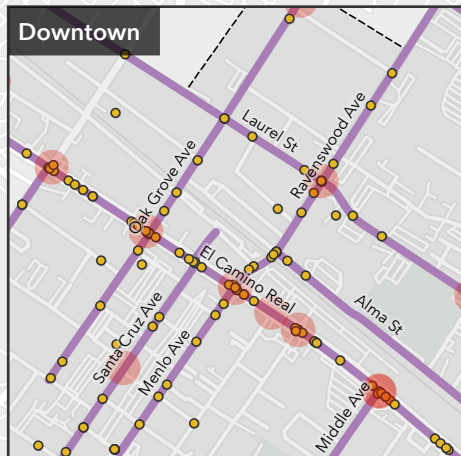


Downtown Menlo Park and state-owned roadways see a high concentration of injury collisions.

High Collision Corridors



High Collision Corridors make up **only 20%** of Menlo Park's roadway miles yet **93%** of its fatal and serious injury collisions.



Data source: Transportation Injury Mapping System (TIMS), 2017-2021

LEGEND

- Killed or Seriously Injured (KSI) Collisions
- Injury Collisions
- High Collision Corridors
- Menlo Park City Boundary



A Collaborative Effort

Conversations with City stakeholders and the community provided critical input into the development of the Vision Zero Action Plan.

Studies show that vulnerable populations like seniors, children, people of color, individuals with disabilities, and people walking and bicycling are overrepresented in fatal and serious injury collisions, even while these collisions go underreported. Conversations with these community members are critical.



What We Heard

Reduce speeds

Make it easier to walk and bike across the street

Prioritize safety around schools

Center equity in the planning process



Outreach Timeline: 2023 - 2024

APR

- Stakeholder Workshop 1

JUL

- Stakeholder Workshop 2
- Safe Routes to School Collaboration

AUG

- Community Workshops, English and Spanish

SEP

- Pop-Up Event at Menlo Park Farmer's Market
- Safe Routes to School Collaboration

OCT

- Stakeholder Workshop 3
- Targeted Conversations with Seniors

NOV

- City Council Study Session
- Community Workshops, English and Spanish

JAN 2024

- Plan Adoption

Vision Zero Safety Priorities

The Vision Zero Action Plan identifies priority projects that address key safety challenges and community concerns. Four priorities guide the City's Vision Zero efforts.



Complete ongoing Transportation Master Plan (TMP) projects. A subset of ongoing safety-oriented TMP projects were selected as priority projects for the Vision Zero Action Plan based on their location on a High Collision Corridor or in the historically under-resourced and underserved Belle Haven and Bayfront communities.

To learn more, please see:
<https://menlopark.gov/tmp>



Advance safety at side street stop controlled intersections. This citywide priority focuses on improving the safety of crossings at side street stop controlled intersections, particularly involving pedestrians 65 years and older and bicyclists under 15 years trying to cross the roadway without a traffic signal or stop sign requiring drivers to yield.



Advance safety at signalized intersections. This citywide priority focuses on reducing common severe collision types at signalized intersections, particularly involving collisions between turning vehicles and people walking or bicycling.



Implement traffic calming on local-serving roadways. Menlo Park's Neighborhood Traffic Management Program (NTMP) was established to address speeding and cut-through traffic on local-serving roadways. The current NTMP will be streamlined and revamped with a renewed focus on safety.

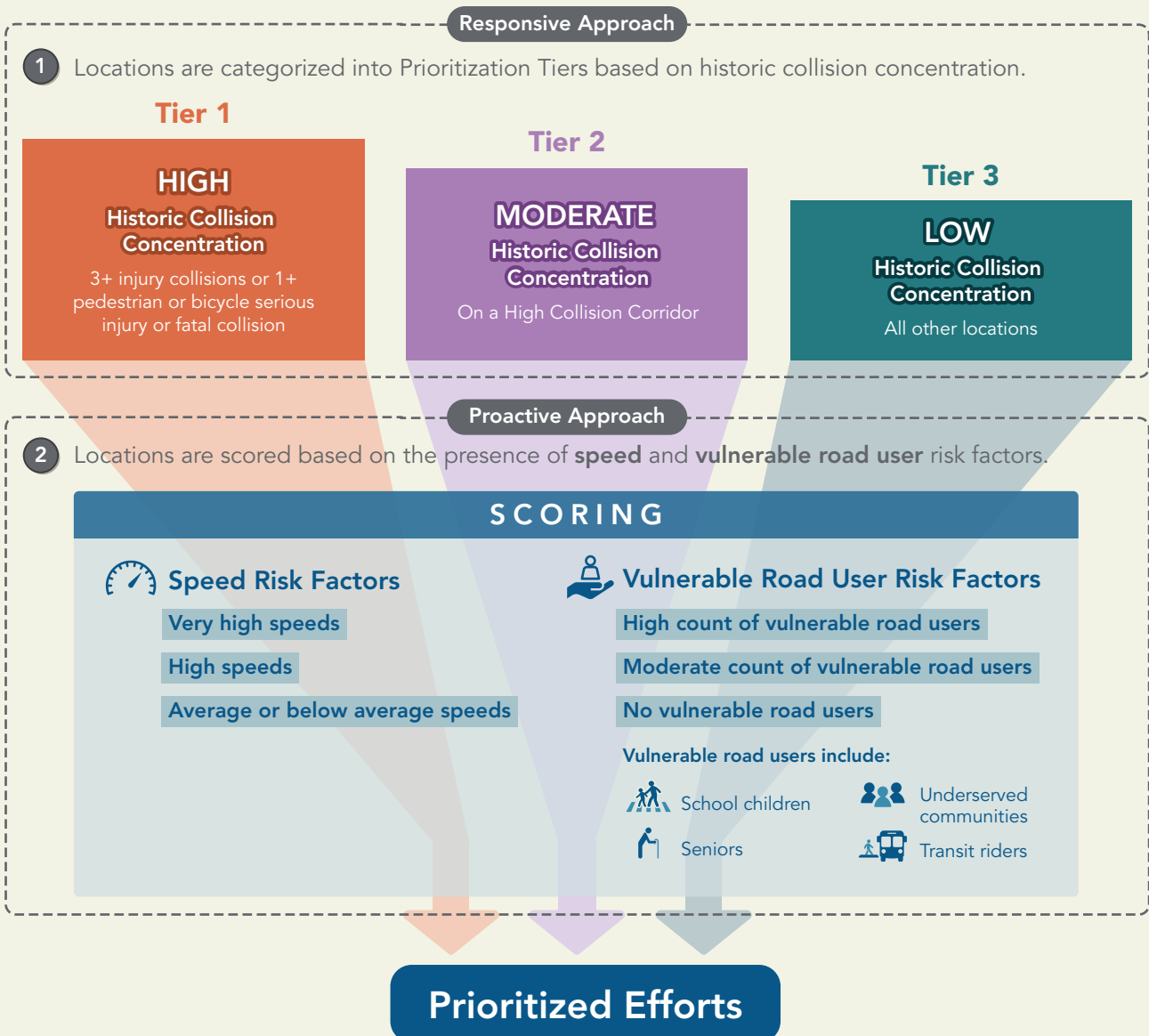


Context matters in safety. Different types of roadways or land uses see different challenges and benefit from different strategies. By understanding context-based safety risk, we can act proactively with effective interventions before collisions occur.

Prioritization Criteria

There is work ahead to advance Menlo Park's safety priorities.

To guide future investments, the City developed a prioritization framework that is both **responsive** to historic collision locations and **proactive** in identifying areas with high collision potential due to the presence of safety risk factors.





Project Priorities

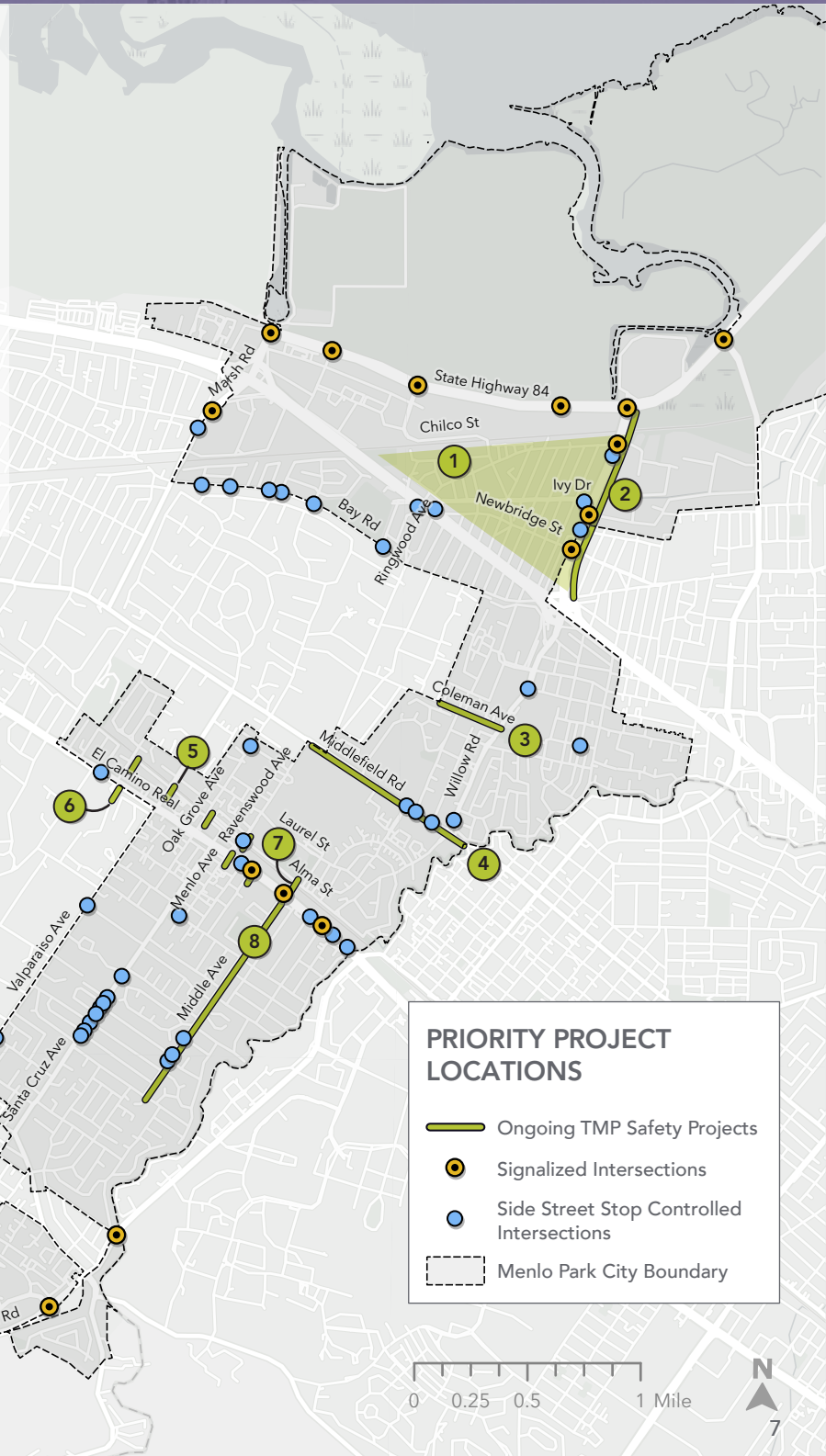
Project priorities include both ongoing TMP projects that address safety needs at specific locations and system-wide projects that address safety needs distributed across the City.

System-wide priorities focus on intersections with signals and side street stops:

- Only 5% of intersections are signalized, but over 40% of fatal and serious injury collisions occur at these locations.
- There are over 1,000 side street stops in the city, and collisions for older pedestrians and younger bicyclists are especially common at these intersections.

Ongoing TMP Safety Projects

- 1 Belle Haven Traffic Calming Plan
- 2 Willow Road Pedestrian & Bicycle Safety Project
- 3 Coleman-Ringwood Avenues Study
- 4 Middlefield Road Safe Streets Project
- 5 Caltrain Crossing Improvements
- 6 El Camino Real Pedestrian Crossings Project
- 7 Middle Avenue Caltrain Crossing Project
- 8 Middle Avenue Complete Streets Project





CITY OF
MENLO PARK



Implementation Strategies

There are several keys to success in implementation of the safety projects and actions identified in the Vision Zero Action Plan.



Oversight & Accountability

Establish a Vision Zero committee or task force made up of key stakeholders and community members meeting regularly to oversee and facilitate delivery of safety projects and programs.



Communication

Communicate regularly with stakeholders and community members to build trust and support for the City's safety goals.



Funding

Stay up to date on relevant grant opportunities and proactively pursue grant funding for the most competitive projects.



Identify Target Metrics & Measure Performance

Set targets to measure safety outcomes and outputs, and track performance annually.



Coordination & Partnerships

Engage key safety partners through regular updates on action plan progress, consultation early in the implementation process, and project bundling to align safety goals with other partner projects.



Phasing & Sequencing

Commit to ongoing, long-term investment from the City, with different areas of focus over different time horizons.



Update the Plan Regularly

Update the action plan every three to five years to assess whether new direction is needed as conditions within the City and region change.



Acknowledgements

Thank you to the nearly 400 community members and stakeholders who participated in virtual and in-person engagement events. Thank you to the elected officials, Menlo Park staff, Complete Streets Commission, business community, and Safe Routes to School group for providing input during this process. Thank you to Climate Resilient Communities and other community-based organizations for partnering with the City to elevate the voices of the Belle Haven community in the planning process.